

Specifications

Model	Z-80/60	
Measurements	US	Metric
Working height maximum*	84 ft	25.77 m
Platform height maximum	78 ft	23.77 m
Horizontal reach maximum	60 ft	18.29 m
Up and over clearance maximum	29 ft	8.83 m
Below ground reach	15 ft 10 in	4.83 m
A Platform length - 8 ft / 6 ft	3ft/2ft 6in	0.91m/0.76m
B Platform width - 8 ft / 6 ft	8ft/6ft	2.44m/1.83m
C Height - stowed	9 ft 10 in	3.00 m
D Length - stowed	37 ft	11.27 m
E Length - transport	37 ft	11.27 m
F Width	8 ft 2 in	2.49 m
G Wheelbase	9 ft 4 in	2.85 m
H Ground clearance - center	12 in	0.30 m

Productivity

Lift capacity	500 lbs	227 kg
Platform rotation	160°	
Vertical jib rotation	135°	
Turntable rotation	360° continuous	
Turntable tailswing - riser up	3 ft 10 in	1.17 m
Turntable tailswing - riser down	7 ft 4 in	2.24 m
Drive speed - stowed	3.0 mph	4.83 km/h
Drive speed - raised**	0.68 mph	1.1 km/h
Lift speed to full height	76 sec	
Gradeability - 2WD - stowed***	30%	
Gradeability - 4WD - stowed***	45%	
Turning radius - 2WS inside	14 ft 6 in	4.42 m
Turning radius - 2WS outside	24 ft 6 in	7.47 m
Turning radius - 4WS inside	7 ft	2.13 m
Turning radius - 4WS outside	15 ft	4.57 m
Controls	12 V DC proportional	
Tires	18-625 NHS	

Power

Power source	Continental TME27 4 cylinder gas/LPG 74 hp (55 kW) T4i Deutz TD 2011 L04i 4 cylinder diesel 74 hp (55 kW) T4i Perkins 804D-33 4 cylinder diesel 63 hp (47 kW)	
Auxiliary power unit	12 V DC	
Hydraulic tank capacity	45 gal	170 L
Fuel tank capacity – diesel machines	35 gal	132 L
Fuel tank capacity – gas/LPG machines	30 gal	114 L

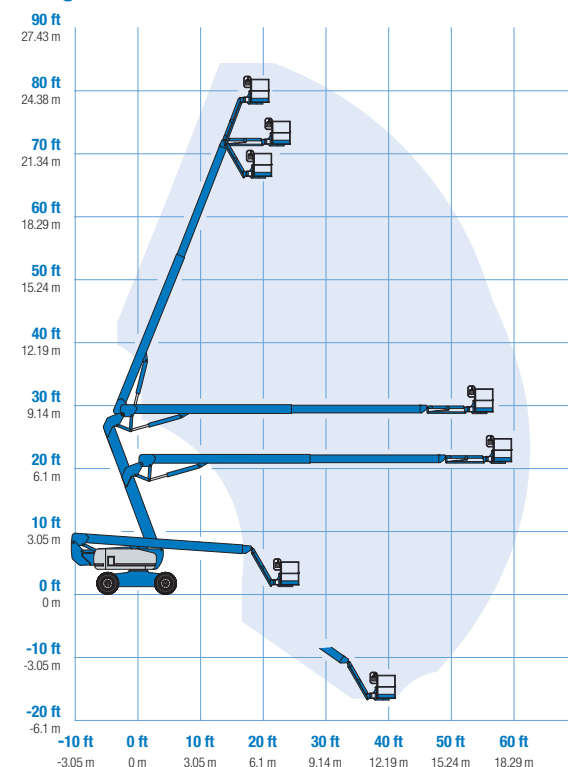
Weight****

2WS	35,900 lbs	16,284 kg
4WS	37,500 lbs	17,010 kg

Standards Compliance

«ANSI A92.5, CSA B354.4, EN 280, AS 1418.10

Range Of Motion Z-80/60

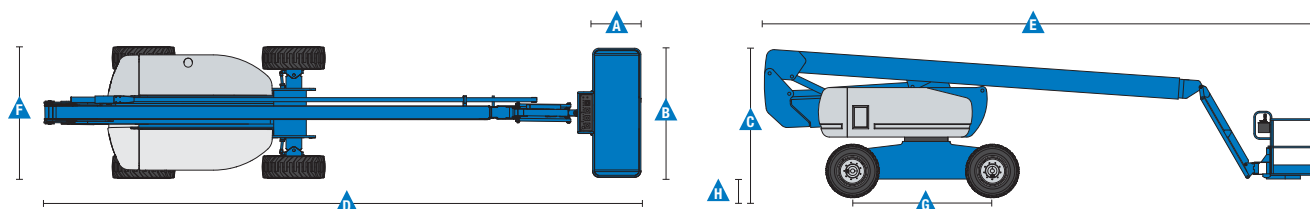


* The metric equivalent of working height adds 2 m to platform height.
U.S. adds 6 ft to platform height.

** In lift mode (platform raised), the machine is designed to operate on firm, level surfaces only.

*** Gradeability applies to driving on slopes. See operator's manual for details regarding slope ratings.

**** Weight will vary depending on options and/or country standards.



Features

Standard Features

Measurements

- 84 ft (25.77 m) working height
- 60 ft (18.28 m) horizontal reach
- 29 ft (8.83 m) up and over clearance
- Up to 500 lbs (227 kg) lift capacity

Productivity

- 6 ft (1.83 m) jib
- Self-leveling platform
- 160° hydraulic platform rotation
- Proportional joystick controls
- Hydraulic oil cooler
- Drive enable
- AC power cord to platform
- Horn
- Hour meter
- Tilt alarm
- Descent alarm
- 360° continuous turntable rotation
- Positive traction drive
- Two speed wheel motors
- Four steering modes: front, rear, crab and coordinated
- Configurable controls to limit lift height to 70 ft

Power

- 12 V DC auxiliary power
- Anti-restart engine protection
- Auto engine fault shutdown
- On board full diagnostic and engine monitoring display
- Block heater (Continental engine)
- Dual battery

Easily Configured To Meet Your Needs

Platform Options

- Steel 8 ft (2.44 m) (standard)
- Steel 6 ft (1.83 m)
- Steel 8 ft (2.44 m) tri-entry

Jib

- 6 ft (1.83 m) jib boom

Engine Options

- 74 hp (55 kW) Continental gas/LPG
- 74 hp (47 kW) Deutz T4i diesel
- 63 hp (55 kW) Perkins T4i diesel

Drive/Steer Options

- 4WD (standard)
- 2WS (standard)
- 4WS

Axle

- Active oscillation

Tire Options

- Rough terrain foam-filled (standard)
- Rough terrain non-marking foam-filled
- High flotation air-filled rough terrain



Options & Accessories

Productivity Options

- Platform swing gate
- Half-mesh platform inserts with swing gate
- Platform top auxiliary rail
- Welder package
- Welder Ready package
- Weld leads to platform
- Air line to platform
- Biodegradable hydraulic oil
- Hostile environment kit
- Deluxe hostile environment kit
- Aircraft protection package (6 ft platform only)
- Thumb rocker steer
- Tool tray
- Pipe cradles (pair)
- Alarm package
- Lockable platform control box covers
- Work light package
- Operator Protective Structure

Power Options

- AC generator packages (110V/60Hz - 220V/50Hz, 3000W)
- Cold Weather Packages
- Diesel catalytic scrubber muffler
- LPG tank only, steel, 33.5 lbs (15.19 kg) capacity

Genie United States

18340 NE 76th Street
P.O. Box 97030
Redmond, Washington 98073-9730
Telephone +1 (425) 881-1800
Toll Free in USA/Canada +1 (800)-536-1800
Fax +1 (425) 883-3475

Distributed By: